

ADMS-13

Instruction Manual

The ADMS-13 software provides convenient editing of the FTM-6000R/E memory channel frequencies, channel information and alpha tags, using a personal computer. Also the transceiver parameters and the setup menu items may be edited and configured easily from the computer keyboard.

Table of contents

Introduction.....	3	• Move Down	16
About this manual	3	• Add Frequency Range	17
Important Notes	3	• Sort	17
System Requirements	4	Communications (Data communication	18
Supported Operating Systems	4	with the FTM-6000R/E) ...	18
CPU	4	Settings	18
RAM (System Memory)	4	• Set Mode	18
HDD (Hard Disk)	4	• Tool Bar	19
Cables	4	• Status Bar	19
Necessary PC peripheral interfaces	4	Window	19
The flow of a setup of ADMS-13	4	Setting the Template Items	20
Trademarks	4	Memory	20
Setup of the ADMS-13	5	Memories	20
Preparation	5	PMS	20
ADMS-13 Programming Software		About the setting items of	
Installation ...	5	each memory channels	20
Uninstalling the ADMS-13	6	• Receive Frequency/ Transmit Frequency	20
SCU-20 USB Driver Software Installation ...	7	• Offset Frequency	20
Connect the FTM-6000R/E and the PC	7	• Offset Direction	20
Execute the ADMS-13.....	8	• Operating Mode	20
Display examples	8	• TAG	21
First Screen	8	• Name	21
Menu Bar	9	• Tone Mode	21
TAB Menu Bar	9	• CTCSS Frequency	21
Set mode screen	10	• DCS Code	21
Communications (Data communication		• User CTCSS	21
with the FTM-6000R/E) ...	11	• Tx Power	21
Communication port setting	11	• Step	21
Get Data from FTM-6000	11	• Narrow	21
Send Data to FTM-6000	12	• Clock Shift	21
Names and Functions of Menu Bar... 13		• Comment	21
File	13	VFO	22
• New	13	About the setting items of	
• Open	13	VFO frequencies	22
• Close	13	• Receive Frequency	22
• Save	13	• Transmit Frequency	22
• Save as	13	• Offset Frequency	22
• Import	13	• Offset Direction	22
• Export	14	• Operating Mode	22
• Print	14	• Tone Mode	22
• Exit	14	• CTCSS Frequency	22
Edit	15	• DCS Code	22
• Undo	15	• User CTCSS	23
• Cut	15	• Tx Power	23
• Copy	15	• Auto Step	23
• Paste	15	• Step	23
• Find	15	• Narrow	23
• Find Next	15	• Clock Shift	23
• Goto Channel	16	• Comment	23
• Insert Channel	16	HOME	24
• Delete Channel	16	About the setting items of	
• Clear Channel	16	HOME Bchannel frequency ...	24
• Move Up	16	• Receive Frequency / Transmit Frequency	24
		• Offset Frequency	24
		• Offset Direction	24

- Operating Mode 24
- TAG 24
- Name 24
- Tone Mode 24
- CTCSS Frequency 24
- DCS Code 25
- User CTCSS 25
- Tx Power 25
- Step 25
- Narrow 25
- Clock Shift 25
- Comment 25

Troubleshooting 26



Introduction

The ADMS-13 programming software uses a Personal Computer to quickly enter and save the FTM-6000R/E memory channel frequencies and data. Also the many menu settings may be adapted for individual operating preferences. All of the information is saved. The setting data can be imported from the FTM-6000R/E and edited setting data can be transferred to the FTM-6000R/E.

- Edit the frequencies, memory names, squelch settings, repeater settings, transmit power, etc. that is related to the VFO, memory channels, and the HOME channel, etc.
- Configure the various set mode menu options on the computer monitor screen
- Use the handy editing functions, such as search, copy, move and paste

About this manual

This manual contains symbols and conventions to call attention to important information.

Symbols	Description
	This icon indicates cautions and alerts the user should be aware of.
	This icon indicates helpful notes, tips and information.

Important Notes

Before downloading this software, please read the "Important Notes" carefully.

- Copyrights and all other intellectual property rights for the software, as well as the software manual, are the property of YAESU MUSEN CO., LTD.
- The revision, modification, reverse engineering, and decompiling of this software is prohibited. Redistribution, transfer, and resale of downloaded files are also prohibited.
- Do not resell the software or manuals.
- All responsibility for the use of this software lies with the customer. Yaesu cannot be held responsible in any way for any damages or losses, which may be incurred by the customer as a result of using this software.

To use the ADMS-13 programmer, the software application must first be installed onto the computer. Read this manual thoroughly and install the software.

System Requirements

Supported Operating Systems

Microsoft® Windows® 10 (32 bit/64 bit)
Microsoft® Windows® 8.1 (32 bit/64 bit)

CPU

The performance of the CPU must satisfy the operating system requirements.

RAM (System Memory)

The capacity of the RAM (system memory) must be more than sufficient to satisfy the operating system requirements.

HDD (Hard Disk)

The capacity of the HDD must be more than sufficient to satisfy the operating system requirements. In addition to the memory space required to run the operating system, about 50 MB or more of additional memory space is required to run the program.

Cables

- When using a USB port on the computer: the optional SCU-20 PC connection cable for USB (The SCU-20 is included in the optional SCU-40 WIRES X Connection Cable Kit.)
- When using a COM port connection: the optional CT-163 cables
- * When using the SCU-20 cable, be sure to install the designated driver before connecting the cable to the computer.

Necessary PC peripheral interfaces

USB port (USB 1.1 / USB 2.0) or RS-232C interface (COM port)

The flow of a setup of ADMS-13

The procedure when using ADMS-13 for the first time is as follows:

ADMS-13 Programming Software Installation (5 page)



SCU-20 USB Driver Software Installation (7 page)



Connect the FTM-6000R/E and the PC (7 page)



Execute the ADMS-13 (8 page)



To a explanation of operation of the ADMS-13 (8 page)

Trademarks

Microsoft®, Windows®, Windows® 8.1 and Windows® 10 are registered trademarks in the United States and other countries.

Setup of the ADMS-13

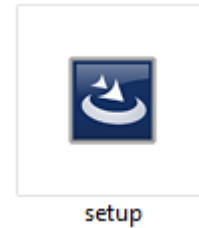
The procedure to install the ADMS-13 on a Windows 10® (64 bit) computer is shown below for the purpose of explanation.

Preparation

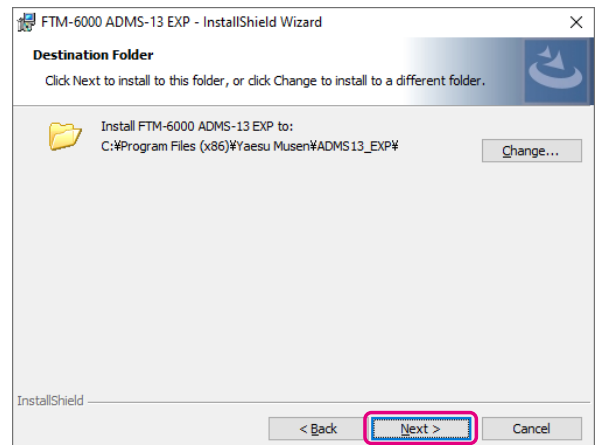
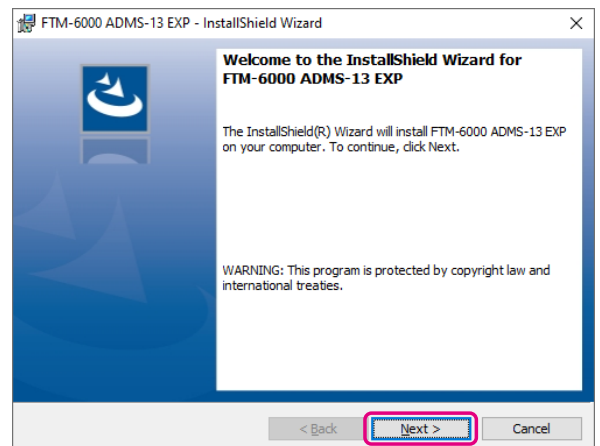
- Please download the ADMS-13 software from the Yaesu Website for details (<http://www.yaesu.com/>).
- Download the ADMS-13 Programming Software to the same folder, and extract the downloaded zip file.
- Start up the computer as an “Administrator” user.

ADMS-13 Programming Software Installation

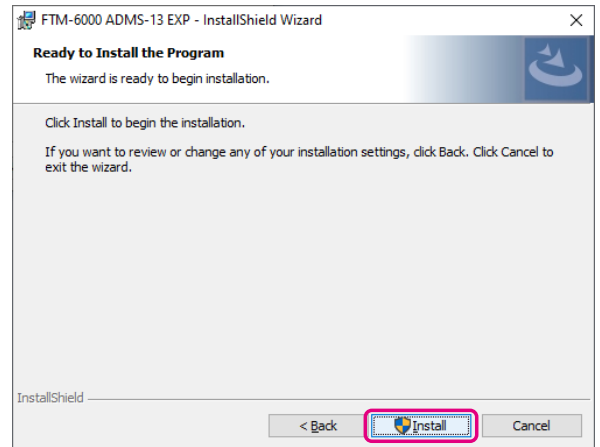
1. Start up the computer as an “Administrator” user.
2. Double-click the “setup.exe” in the same folder that you have unzip the files.
 - When the “.NET Framework install” dialog box opens, follow the on-screen instructions to install.
3. The dialog box, which is shown right, will open. Click the [Next] button.



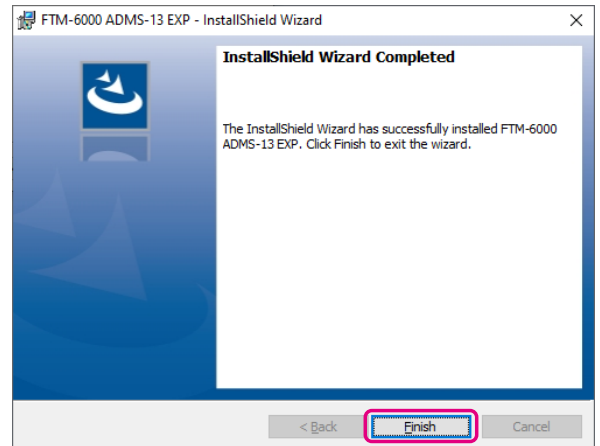
4. Select the folder to install, then click the [Next] button.



5. Click the [Install] button.
 - When the [User Account Control] dialog box opens, click the [Yes] button.



6. When the installation is finished, the dialog box shown right will open. Click the [Finish] button, to complete the installation of the software.



Uninstalling the ADMS-13

The procedure to uninstall the ADMS-13 on a Windows 10® (64 bit) computer is shown below for the purpose of explanation.

1. Disconnect the USB Cable from the computer.
2. Click the [Start] button and then click “Settings”.
3. Click “Apps”.
4. Select “FTM-6000 ADMS-13 EXP” and then click “Uninstall”.
 - When the “User Account Control” dialog box opens, click the left mouse button on [Yes].
 - The uninstall of the software will start. The uninstall procedure ends with this.

SCU-20 USB Driver Software Installation



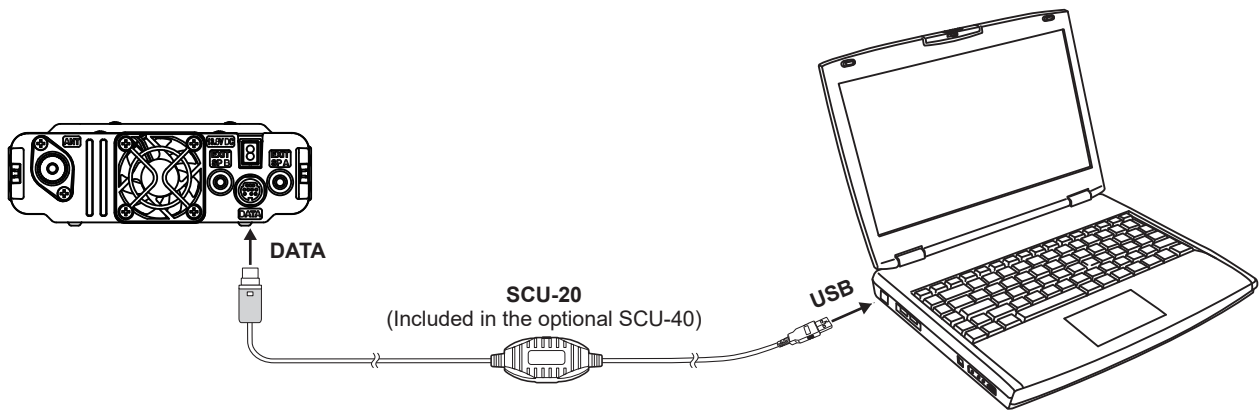
Do not connect the transceiver to the computer via the SCU-20 PC Connection Cable until the driver installation process has been completed. Connecting the SCU-20 to the computer before installation has been completed may result in the wrong driver being installed, preventing proper operation.

Before using the SCU-20 PC connection cable, installation of the driver software for the SCU-20 is required. Download the driver software for the SCU-20 in advance.

Download the designated driver software from the Yaesu website (<http://www.yaesu.com/>). Read the installation manual thoroughly and install the driver.

Connect the FTM-6000R/E and the PC

1. Refer to the figure and connect the SCU-20 PC connection cable.
When using the CT-163 cable, connect the D-SUB connector to the COM port of the PC.



Execute the ADMS-13

Double-click the “FTM-6000 ADMS-13 EXP” icon on the desktop of a computer. Click “Exit” in the “File” menu to close the ADMS-13.



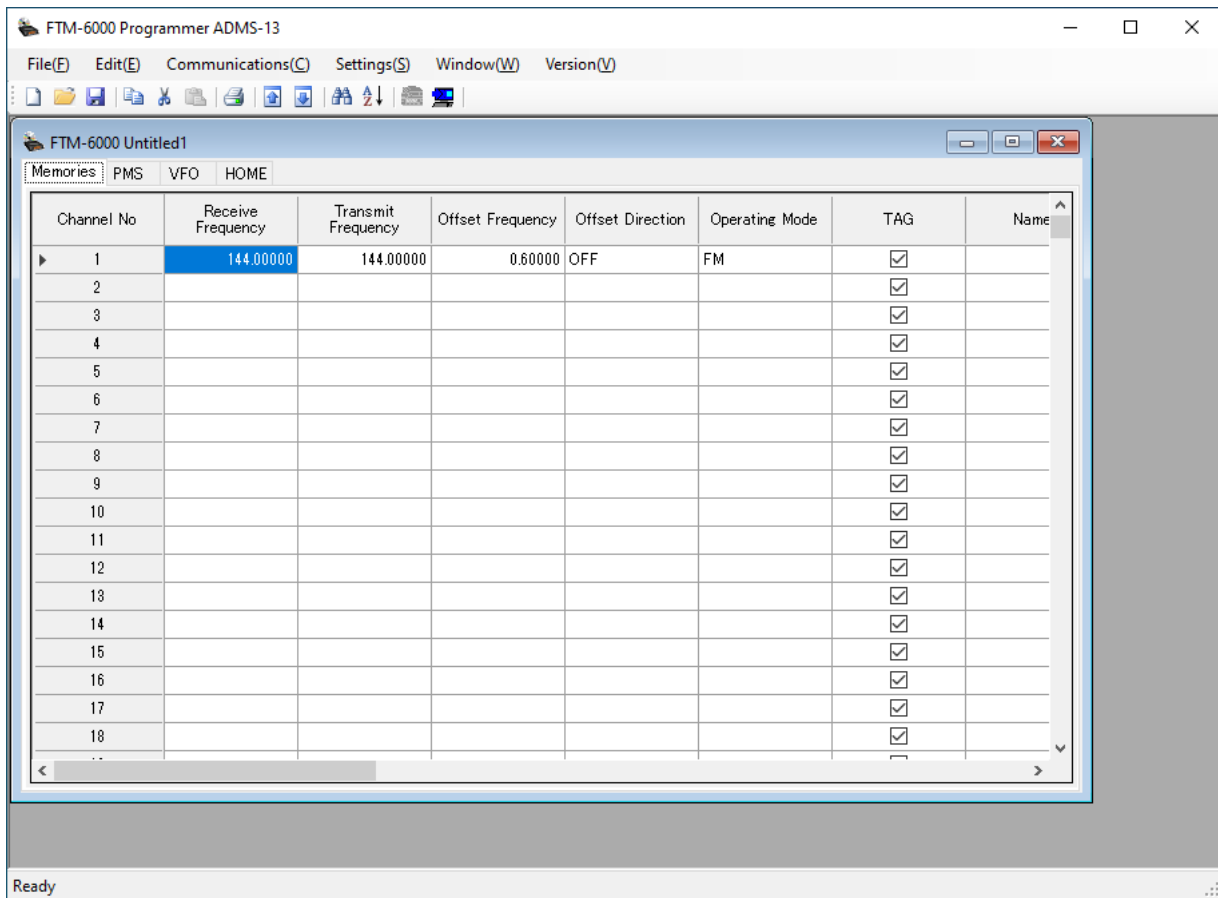
First, use the “**Get Data from FTM-6000**” command (Page 9) to upload the setting data of the FTM-6000 to the ADMS-13 programmer.



Display examples

First Screen

This is the first screen to be displayed when starting the ADMS-13 software.

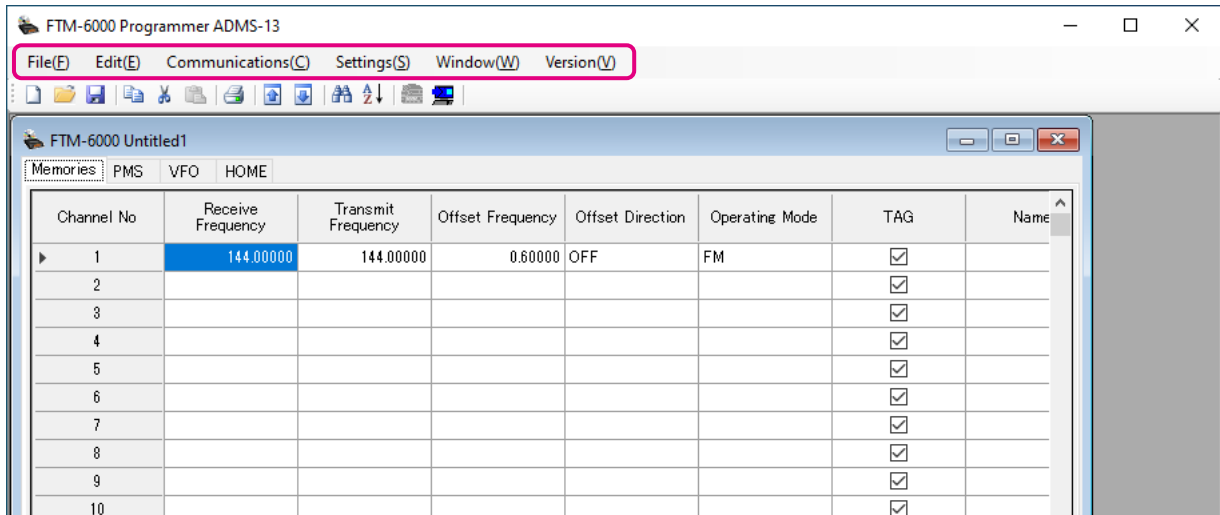


Menu Bar

Click the left mouse button on each Menu in the Menu bar to settings the import/export of the data file, get data form FTM-6000R/E and send data to FTM-6000R/E.



For more details, see “Names and Functions of Menu Bar”.

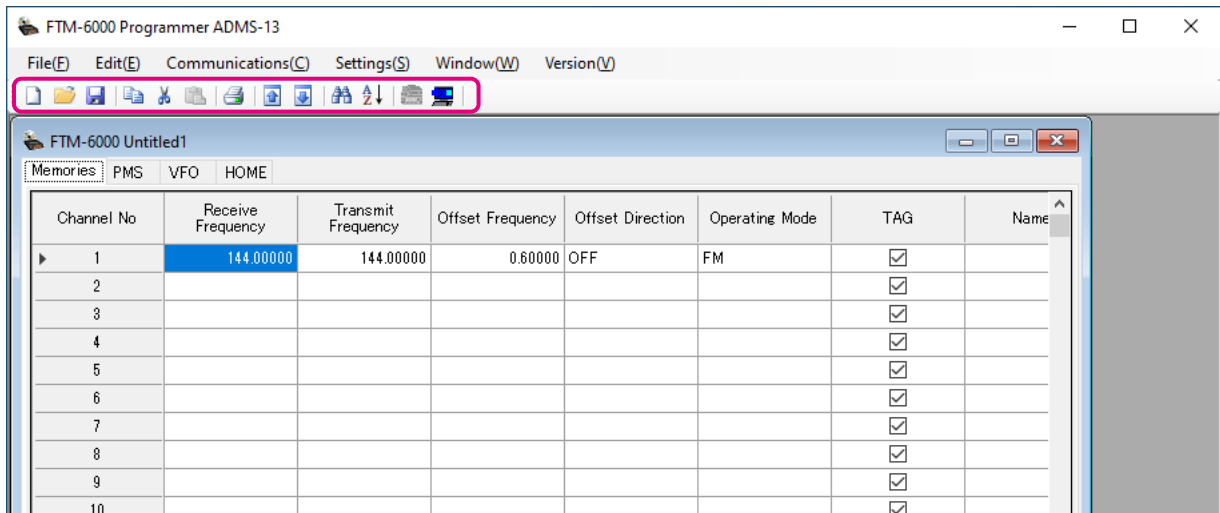


TAB Menu Bar

Click the left mouse button on each TAB in the title bar (Memories, PMS, VFO, HOME) to display the frequency list of the desired memory channels, VFO and other preset transceiver settings.



For more details, see “Setting the Template Items”.



Set mode screen

Basic setting items which are not related to memory channels can be configured from “Set Mode”.
Click the left mouse button on “Settings” in the “Settings” menu to open the item “Set Mode” window.



For more details, see “Set Mode”.

SetMode
✕

Common

Config

APO OFF ▾

ARTS MODE IN RANGE ▾

ARTS INTERVAL 30 SEC ▾

BCLO OFF ▾

BEEP LOW ▾

LCD DIMMER OFF ▾

MIC GAIN NORMAL ▾

P1 SQL OFF ▾

MIC PGM KEY P2 HOME ▾

P3 SCAN ON ▾

P4 T-CALL ▾

RPT ARS ON ▾

PKT SPEED 1200 bps ▾

BAND SELECT AIR ON ▾

BAND SELECT VHF ON ▾

BAND SELECT UHF ON ▾

BAND SELECT OTHER ON ▾

TOT 5min ▾

Option

Bluetooth

Bluetooth OFF ▾

SAVE OFF ▾

AUDIO AUTO ▾

SCAN

SCAN RESUME BUSY ▾

DW REVERT OFF ▾

Signaling

DTMF AUTO MANUAL ▾

PAGER CODE

RX CODE 05 ▾ 47 ▾

TX CODE 05 ▾ 47 ▾

BELL OFF ▾

SQL EXP OFF ▾

WX ALERT OFF ▾

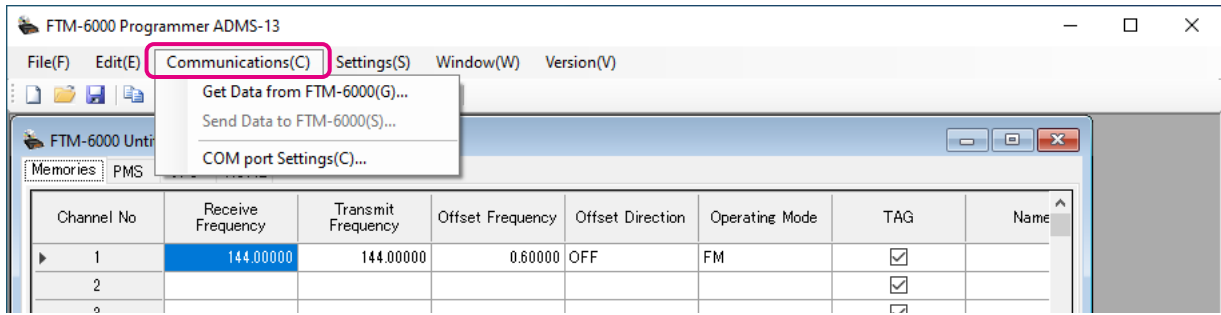
DTMF Memory

Channel No	CODE
1	
2	
3	
4	
5	
6	
7	
8	
9	

FUNCTION Registration

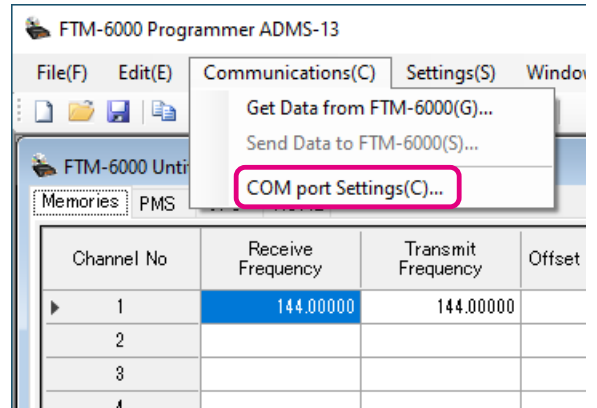
MENU	FUNCTION	F1
01 APO	<input type="radio"/>	<input type="radio"/>
02 ARTS MODE	<input type="radio"/>	<input type="radio"/>
03 ARTS INTERVAL	<input type="radio"/>	<input type="radio"/>
04 BCLO	<input type="radio"/>	<input type="radio"/>
05 BEEP	<input type="radio"/>	<input type="radio"/>
06 BELL	<input type="radio"/>	<input type="radio"/>
07 CLOCK TYPE	<input type="radio"/>	<input type="radio"/>
08 DIMMER	<input type="radio"/>	<input type="radio"/>
09 DTMF	<input type="radio"/>	<input type="radio"/>
10 DTMF TX	<input type="radio"/>	<input type="radio"/>
11 DTMF MEMORY	<input type="radio"/>	<input type="radio"/>
12 HOME	<input checked="" type="radio"/>	<input checked="" type="radio"/>
13 MIC GAIN	<input type="radio"/>	<input type="radio"/>
14 MIC PROGRAM	<input type="radio"/>	<input type="radio"/>
15 PAGER	<input type="radio"/>	<input type="radio"/>
16 PACKET SPEED	<input type="radio"/>	<input type="radio"/>
17 RX MODE	<input type="radio"/>	<input type="radio"/>
18 BAND SELECT	<input type="radio"/>	<input type="radio"/>
19 RPT REV	<input checked="" type="radio"/>	<input type="radio"/>
20 RPT SET	<input checked="" type="radio"/>	<input type="radio"/>
21 RPT OTHER	<input type="radio"/>	<input type="radio"/>
22 SCAN ON	<input type="radio"/>	<input type="radio"/>
23 SCAN TYPE	<input type="radio"/>	<input type="radio"/>
24 SQL TYPE	<input type="radio"/>	<input type="radio"/>
25 SQL CODE	<input type="radio"/>	<input type="radio"/>
26 SQL EXPANSION	<input type="radio"/>	<input type="radio"/>
27 STEP	<input type="radio"/>	<input type="radio"/>
28 TEMP	<input type="radio"/>	<input type="radio"/>
29 TOT	<input type="radio"/>	<input type="radio"/>
30 TX POWER	<input checked="" type="radio"/>	<input type="radio"/>
31 VER DISPLAY	<input type="radio"/>	<input type="radio"/>
32 VCC	<input type="radio"/>	<input type="radio"/>
33 WIDTH	<input type="radio"/>	<input type="radio"/>
34 WX ALERT	<input type="radio"/>	<input type="radio"/>
35 BLUETOOTH	<input type="radio"/>	<input type="radio"/>

Communications (Data communication with the FTM-6000R/E)

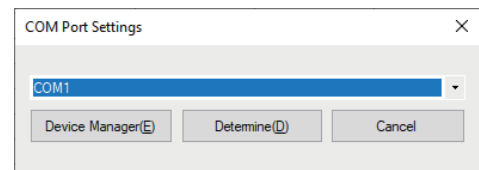


Communication port setting

1. Connect the FTM-6000R/E to a computer (Refer to the “Connect the FTM-6000R/E and the PC”).
2. Execute the ADMS-13 (Refer to the “Execute the ADMS-13”).
3. From the menu bar, select “**Communications**” menu, and then click on the “**COM port Settings**”.




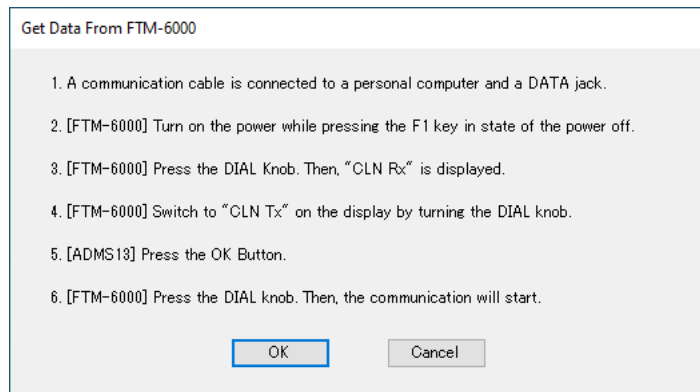
4. Click [▼] in the “**Serial Port Selection**” column and click the COM port connected to the FTM-6000R/E.
5. Click [**Determine**].



Get Data from FTM-6000

This command transfers the settings data of the FTM-6000R/E to the ADMS-13 programmer. To communicate with the FTM-6000R/E and create a new data file.

1. Connect the PC connection cable SCU-20 between the FTM-6000R/E and the computer.
2. Click the “” icon or the “Get Data from FTM-6000” parameter in the “Communications” menu. The “Get Data From FTM-6000” window will open.
3. Follow the on-screen instructions to acquire data from the FTM-6000R/E.



When the data transfer is completed, the template screen received from the FTM-6000R/E appears on the computer display.

The memory channels and configuration menu data may be edited using the ADMS-13 software tools.



This template and configuration data may be saved to the computer hard drive, using the “Save” or “Save as” commands in the “File” menu.

Send Data to FTM-6000

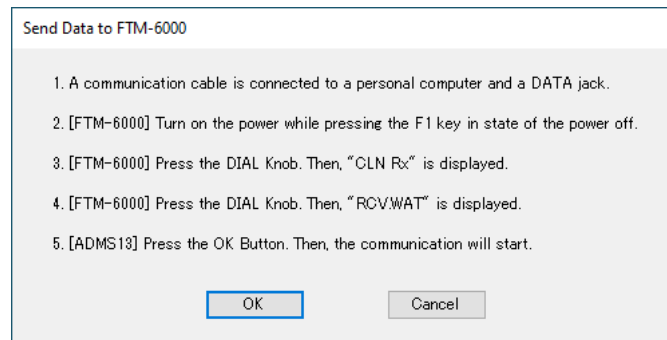
This command downloads the ADMS-13 data from the computer to the FTM-6000R/E.

Click the “Save Data to FTM-6000R/E” parameter in the “Communications” menu. The transmission procedure screen will open.



To load a previously created data file to the FTM-6000R/E, click the “Open” parameter in the “File” menu, and open the desired file before performing the send data operation above.

1. Connect the PC connection cable SCU-20 between the FTM-6000R/E and the computer.
2. Follow the on-screen instructions to transmit data to the FTM-6000R/E.



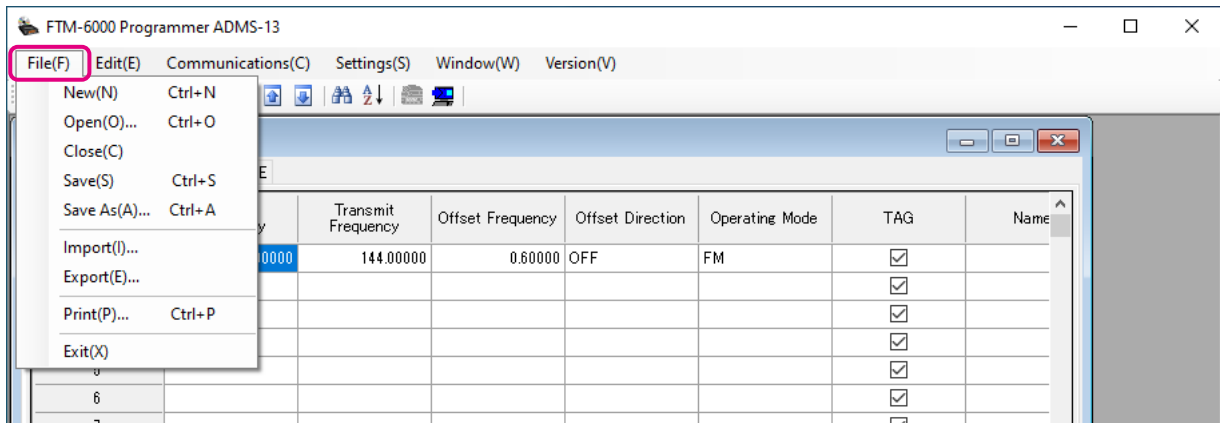
3. After the data transmission completes, “Completed” will appear on the computer display, and click the [Close] button.
4. The FTM-6000R/E will automatically re-start in accordance with the set data.



-
- Never disconnect the programming cable while data transmission is in progress.
 - Pay careful attention to the power cable and the connections to the FTM-6000R/E and the computer, so as not to lose the power during data reception/transmission.
-

Names and Functions of Menu Bar

File



- **New**

Click the “New” parameter in the “File” menu to open a new configuration file. Multiple configuration files may be created and opened at the same time. Standard values are preset for each memory channel, VFO and set mode.

- **Open**

Click the “Open” parameter in the “File” menu to display the “Open” window. Select the existing saved template file, and click the “Open” button.

- **Close**

Close the displayed configuration file by clicking the left mouse button on the “Close” parameter in the “File” menu.

- **Save**

Click the “Save” configuration in the “File” menu.

To save the present configuration, and overwrite the selected configuration file without changing the file name.

- **Save as**

Click the “Save As” parameter in the “File” menu.

Specify the file name and destination folder for the selected configuration file and then click the “Save” button to save the file.

- **Import**

ADMS-13 data files may be created using a spreadsheet such as Microsoft Excel.

To create a data file for the import of data, save the spreadsheet in the “CSV” comma separated file format. A spreadsheet may be easily created by exporting the template data in the “CSV” format using the ADMS-13 “Export” command. After the “CSV” data has been edited the spreadsheet may be imported back into the ADMS-13 Programmer.

A separate import file is needed for each template.

For example, to import the VFO and memory templates; first, click the “VFO” tab to display the VFO template, then import the VFO (CSV) file; next, click the “Memories” tab to display the “Memory” template; then import the Memory (CSV) file.



Do not edit the “Check” line at the right side end of the completed CSV file.

- **Export**

To export the data file in the “CSV” (Comma Separated Values) format.

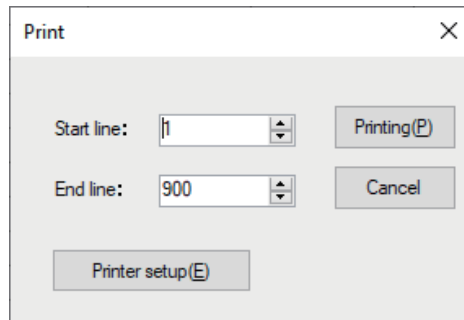
Click the “Export” parameter in the “File” menu, On the “Save as” screen displayed, specify the directory and file name and save the file.

Type a file name in the bottom box, then click the [OK] button.

- **Print**

To print the current template file data to hard copy, click the “Print” parameter in the “File” menu, the “Print” window will open to enable printing. Set the start line and the end line of the data you want to print, and then click the “Printing” button to start printing.

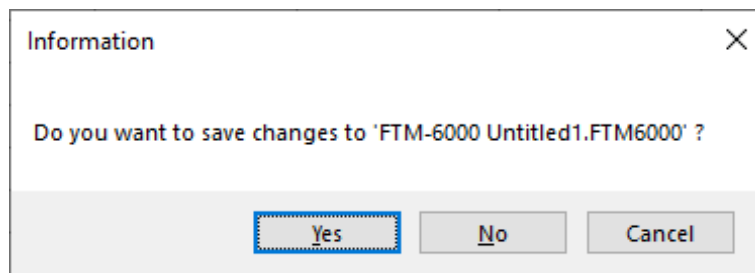
To change the specific printer settings, go to the Printer properties by clicking the the “Printer setup” button.



- **Exit**

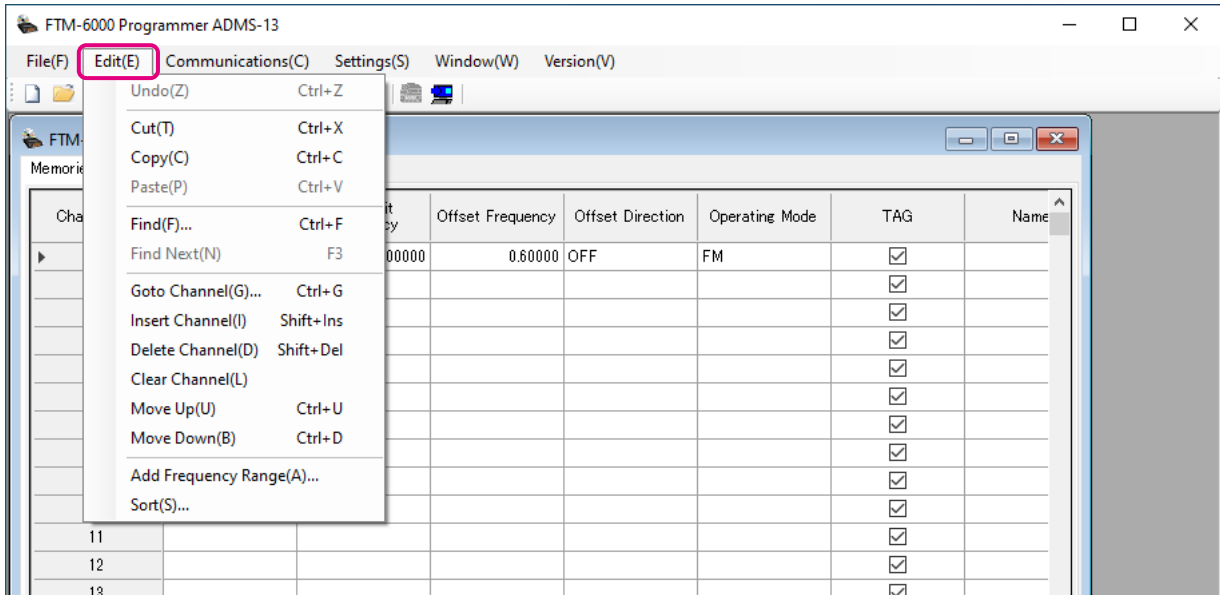
To exit the ADMS-13 programmer, click the “Exit” parameter in the “File” menu to close the ADMS-13 software.

If the following pop-up screen appears to confirm saving, follow the on-screen instruction to select the desired button and close the ADMS-13 software.



Edit

Click the row to edit, then perform the following each operations.



Part of setting items of each row cannot be cut, copy, and paste is not possible.

- **Undo**

To undo the edited data, click the “Undo” parameter in the “Edit” menu.

- **Cut**

To cut the data of the selected area, click the “Cut” parameter in the “Edit” menu.

- **Copy**

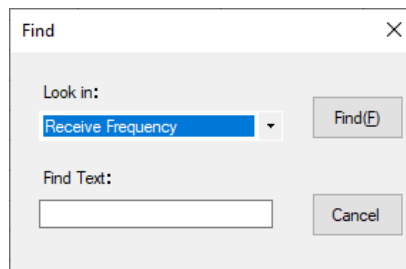
To copy the data of the selected area to the clipboard, click the “Copy” parameter in the “Edit” menu.

- **Paste**

To paste the clipboard data to the selected area, click the “Paste” parameter in the “Edit” menu.

- **Find**

To find a specified text, click the “Find” parameter in the “Edit” menu. The “Find” window will open.



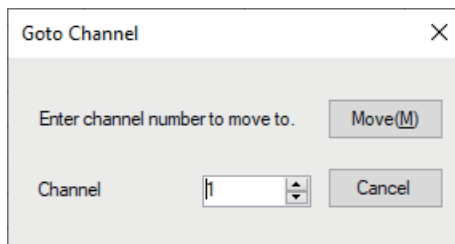
Select the column from the drop down list. Enter the text to search for, and then click the [Find] button. The candidate character string found will be highlighted.

- **Find Next**

Click the “Find Next” parameter in the “Edit” menu to move to the next candidate character string.

- **Goto Channel**

Move the cursor to the desired channel, click the “Goto Channel” parameter in the “Edit” menu to open the screen where you can specify the channel you want to move to.



Enter the channel number you wish to find, and then click the [Move] button.

- **Insert Channel**

To insert channel data, click the “Insert Channel” parameter in the “Edit” menu to create a blank new channel data row under a current cursor. If there are any higher channel numbers with channel data, the higher channel numbers will be displayed after the newly inserted channel number so that the channels are displayed in the ascending order.

Attempting to insert a new channel when highest channel contains data causes the data registered to highest channel to be deleted. “Continue?” will appear. If you agree, click the [OK] button.

- **Delete Channel**

To delete the specified range of channel data, click the “Delete Channel” parameter in the “Edit” menu. The channels that were displayed after the deleted channels will shift up accordingly.

- **Clear Channel**

To clear the current channel data, click the “Clear Channel” parameter in the “Edit” menu. The channels that were displayed after the deleted channels will not shift up and the blank channels will remain.

- **Move Up**

To move the current channel data up one row, click the “Move Up” parameter in the “Edit” menu.

If other channel data already exists where the channel data moves, the existing channel will be overwritten.

- **Move Down**

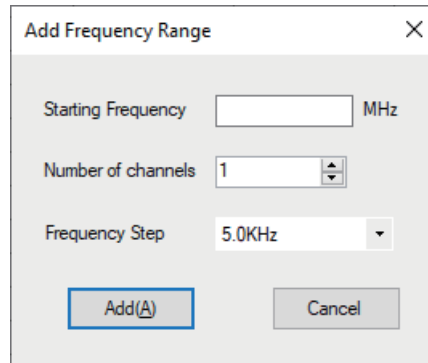
To move the current channel data down one row, click the “Move Down” parameter in the “Edit” menu, the currently selected channel data moves downward one row.

If other channel data already exists where the channel data moves, the existing channel will be overwritten.

• Add Frequency Range

New channels may be created in designated frequency steps from the starting frequency by clicking the left mouse button on the “Add Frequency Range” parameter in the “Edit” menu. The “Add Frequency Range” window will open.

A specified number of memory channels may be created, beginning from the starting frequency in the specified frequency steps.



Starting Frequency: Enter the lower frequency

Number of Channel: Enter the number of channels

Frequency Step: Enter the desire frequency step

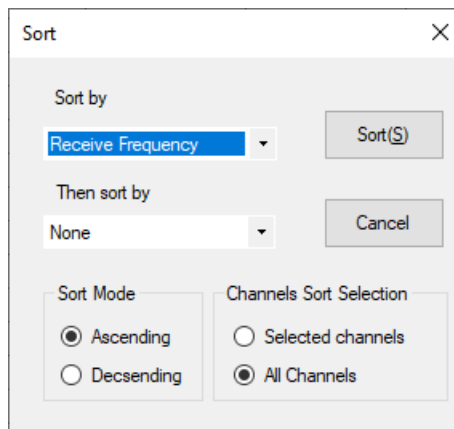
Click the [Add] button to create the additional specified memory channels.



* The 8.33 kHz step is available only when receiving on the Air band (108-136.995 MHz).

• Sort

Click the “Sort” parameter in the “Edit” menu, the “Sort” window will open.



Sort by: Select the first parameter for sorting items such as the order of frequencies.

Then sort by: Select the second parameter for sorting.

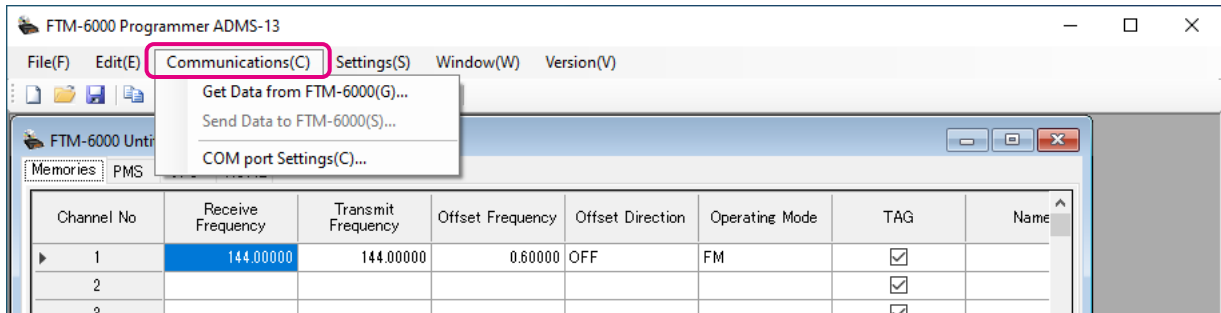
Sort Mode: Set to sort in ascending or descending order.

Channels Sort Selection: Set whether to sort the selected channel column(s) or to sort all channel columns.

Click the [Sort] button to initiate the sorting according to the above instructions.

The data may be restored to the previous order by using the “Undo” command.

Communications (Data communication with the FTM-6000R/E)



For details on the Communications Menu, refer to “Communications (Data communication with the FTM-6000R/E)” (Page 11).

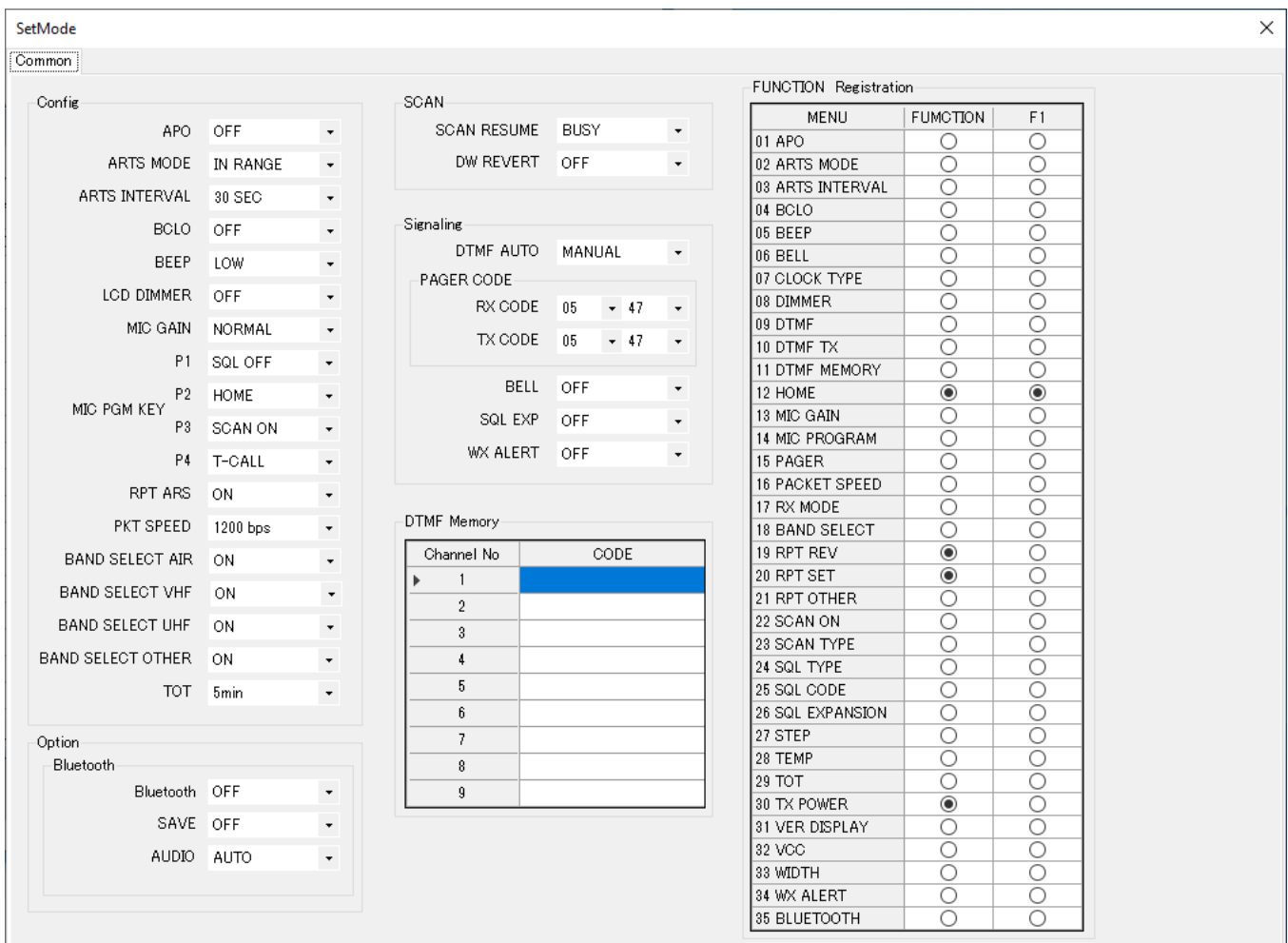
Settings

• Set Mode

From the set mode menu, you can customize the various functions of the FTM-6000R/E according to your preferences.

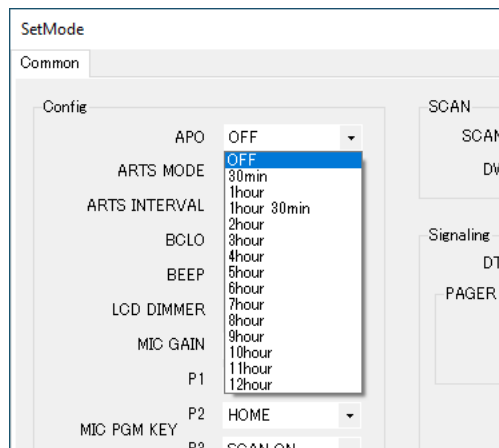
The ADMS-13 software displays the set mode menu in an easy-to-understand manner where you can change and save the setting values.

Click the “Settings” parameter in the “Settings” menu to open the “SetMode” window.



To change the setting of each item in the window, click the “▼” icon to show the dropdown settings list, and then click the desired selection in the list.

Example:



Refer to the “FTM-6000R/E Operating Manual” for the details of each function. When you have completed editing the settings of the Menu Setting window.

• Tool Bar

Click the “Toolbar” parameter in the “Setting” menu to display or hide the Toolbar. A check mark appears next to the “Toolbar” parameter when the Toolbar is displayed.



• Status Bar

The “Status Bar” describes the action to be executed by the selected menu item, or the depressed toolbar button, and keyboard latch state.

A check mark appears next to the “Status Bar” parameter when the Status Bar is displayed.



Window

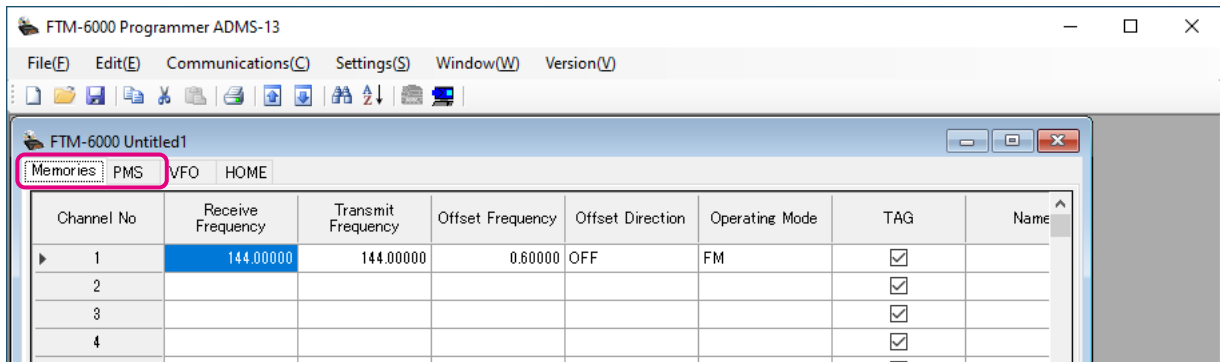
This menu sets the operating window parameters of the ADMS-13 programmer.

- Click the “Tile (up and down)” parameter in the “Window” menu to display multiple template files by dividing the window into two lists (upper and lower parts).
- Click the “Tile (up and down)” parameter in the “Window” menu to display multiple template files by dividing the window into two lists (right and left parts).
- Click the “Cascade” parameter in the “Window” menu to display multiple templates in cascade format.

Setting the Template Items

Memory

Use this page to edit the Memory channels data, Skip Memory channels, or PMS (Programmable Memory Scan) memory channels.



Memories

Enter and edit the frequencies you normally use to the memory channels. Up to 999 channels can be registered.

PMS

Edit the upper and lower limit frequencies for performing PMS (Programmable Memory Scan).

Enter the lower limit frequency for the L channel and the upper limit frequency for the corresponding U channel. Up to 50 pairs (100 channels) of PMS can be registered.

About the setting items of each memory channels

• Receive Frequency/ Transmit Frequency

Enter the desired receive/transmit frequency. When the frequency entry is complete, use the → key to move the cursor to the right and subsequently configure the additional detail settings for the channel. To enter the transmit frequency for the next channel, press the ENTER or ↓ key. The receive and transmit frequencies can be set separately.

• Offset Frequency

When a transmit frequency is not entered, transmission will be performed at a frequency obtained by adding/subtracting the offset frequency to/from the receive frequency.

• Offset Direction

Set the frequency shift direction.

OFF: The transmit frequency is not shifted.

-RPT: The transmit frequency is shifted to the minus offset.

+RPT: The transmit frequency is shifted to the plus offset.

-/+ The transmit frequency is not shifted.

• Operating Mode

Select the operating mode for receive channel.

FM: The selected frequency band is set to FM mode.

AM: The selected frequency band is set to AM mode.

- **TAG**

By ticking the checkbox of this item, when recalling the memory channels, the set memory tag and receive frequency are displayed. By Turning off the checkbox, the receive frequency is only displayed. This setting is common to all memory channels.

- **Name**

Enter the desired memory name (up to 6 digits).

- **Tone Mode**

This item selects the Audio Squelch Code type.

- **CTCSS Frequency**

This item selects the Tone Frequency of the Tone Squelch.

- **DCS Code**

Select the DCS code when DCS is set.

- **User CTCSS**

Select the idle line frequency to remove signals such as idle line signals used by private railways and control signals of MCA radio system.

- **Tx Power**

This item selects the TX Power.

- **Step**

Sets the channel step for receiving channels.

- **Narrow**

By ticking the checkbox of this item, switches to the Narrow FM mode.

- **Clock Shift**

When an internal spurious signal occurs due to the microcomputer clock, turn this setting on (tick the checkbox). This may improve the situation.

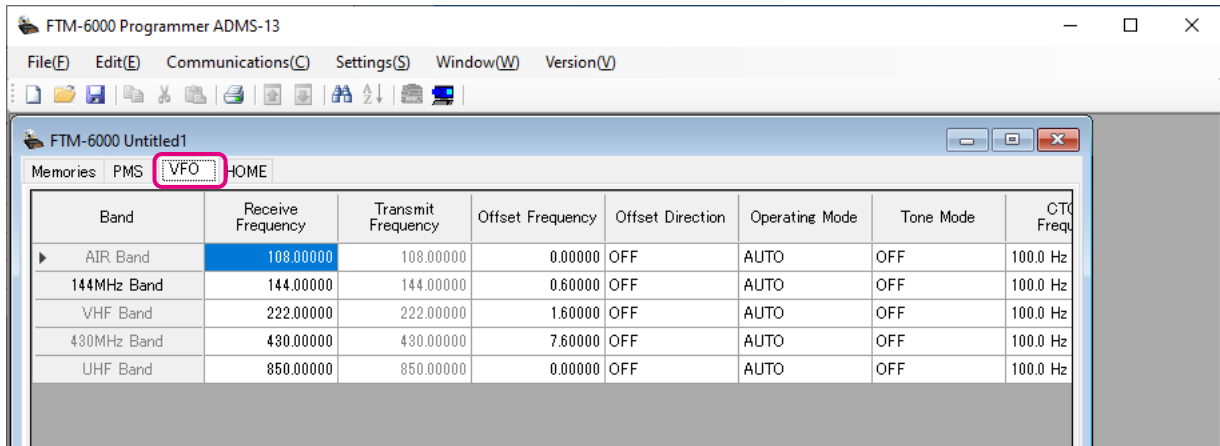
Usually, this item is set to "OFF" (un-tick the checkbox).

- **Comment**

Comments may be added to the registered memory channels. Up to 255 letters can be used. This function is useful in organizing the memory channels by, for example, applying a category name to each channel. These comments are not transferred to the FTM-6000R/E.

VFO

Edit the VFO configurations for each band on this page template.



About the setting items of VFO frequencies

• Receive Frequency

Enter the VFO frequencies for each band. The FTM-6000R/E default Frequencies are pre-entered into the ADMS-13 standard template.

A frequency that is out of the transceiver's range cannot be entered. When the error pop-up window is opened, enter the correct frequency.

• Transmit Frequency

The transmit frequency display is grayed out, and it will be set automatically, in accordance with the receive, and the offset frequencies.

• Offset Frequency

When a transmit frequency is not entered, transmission will be performed at a frequency obtained by adding/subtracting the offset frequency to/from the receive frequency.

• Offset Direction

Set the frequency shift direction.

OFF: The transmit frequency is not shifted.

-RPT: The transmit frequency is shifted to the minus offset.

+RPT: The transmit frequency is shifted to the plus offset.

• Operating Mode

Select the operating mode for receive channel.

FM: The selected frequency band is set to FM mode.

AM: The selected frequency band is set to AM mode.

• Tone Mode

This item selects the Audio Squelch Code type.

• CTCSS Frequency

This item selects the Tone Frequency of the Tone Squelch.

• DCS Code

Select the DCS code when DCS is set.

- **User CTCSS**

Select the idle line frequency to remove signals such as idle line signals used by private railways and control signals of MCA radio system.

- **Tx Power**

This item selects the TX Power.

- **Auto Step**

By ticking the checkbox of this item, the frequency step is set to "AUTO" automatically provides a suitable frequency step (frequency variation by rotating the **DIAL** knob) according to the frequency band. By Turning off the checkbox, the step setting become selectable.

- **Step**

Sets the channel step for receiving channels.

- **Narrow**

By ticking the checkbox of this item, switches to the Narrow FM mode.

- **Clock Shift**

When an internal spurious signal occurs due to the microcomputer clock, turn this setting on (tick the checkbox). This may improve the situation.

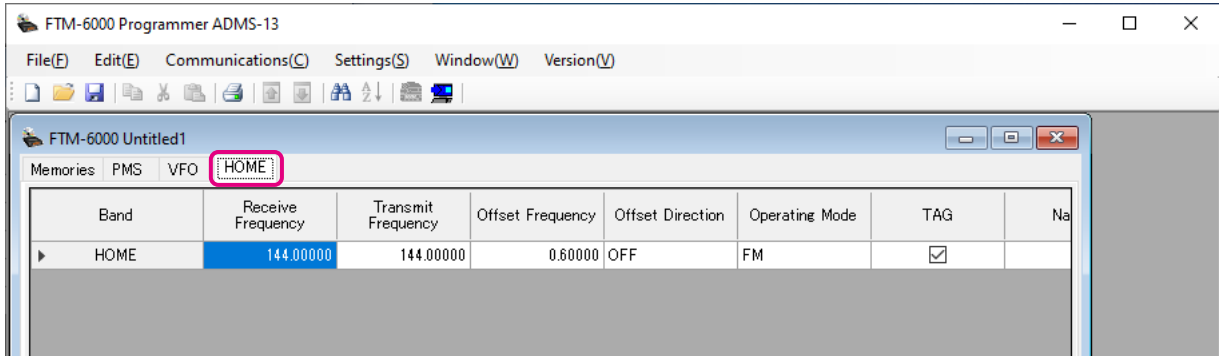
Usually, this item is set to "**OFF**" (un-tick the checkbox).

- **Comment**

Comments may be added to the edited VFO bands. Up to 255 letters can be used. This function is useful in organizing the VFO bands by, for example, applying a category name to each VFO bands. These comments are not transferred to the FTM-6000R/E.

HOME

Edit the Home Channel configurations:



About the setting items of HOME Bchannel frequency

• Receive Frequency / Transmit Frequency

Enter any desired changes into Home Channel frequency. The FTM-6000R/E default Frequencies are pre-entered into the ADMS-13 standard template.

A frequency that is out of the transceiver's range cannot be entered. When the error pop-up window is opened, enter the correct frequency. Inputting the receive frequency, the transmit frequency is automatically set.

• Offset Frequency

When a transmit frequency is not entered, transmission will be performed at a frequency obtained by adding/subtracting the offset frequency to/from the receive frequency.

• Offset Direction

Set the frequency shift direction.

OFF: The transmit frequency is not shifted.

-RPT: The transmit frequency is shifted to the minus offset.

+RPT: The transmit frequency is shifted to the plus offset.

-/+ : The transmit frequency is not shifted.

• Operating Mode

Select the operating mode for receive channel.

FM: The selected frequency band is set to FM mode.

AM: The selected frequency band is set to AM mode.

• TAG

By ticking the checkbox of this item, when recalling the memory channels, the set memory tag and receive frequency are displayed. By Turning off the checkbox, the receive frequency is only displayed. This setting is common to all memory channels.

• Name

Enter the desired memory name (up to 6 digits).

• Tone Mode

This item selects the Audio Squelch Code type.

• CTCSS Frequency

This item selects the Tone Frequency of the Tone Squelch.

- **DCS Code**

Select the DCS code when DCS is set.

- **User CTCSS**

Select the idle line frequency to remove signals such as idle line signals used by private railways and control signals of MCA radio system.

- **Tx Power**

This item selects the TX Power.

- **Step**

Sets the channel step for receiving channels. Normally, when a frequency is entered, the optimal channel step will be automatically set according to the frequency.

- **Narrow**

By ticking the checkbox of this item, switches to the Narrow FM mode. The degree of modulation becomes half the normal level.

- **Clock Shift**

When an internal spurious signal occurs due to the microcomputer clock, turn this setting on (tick the checkbox). This may improve the situation.

Usually, this item is set to "OFF" (un-tick the checkbox).

- **Comment**

Comments may be added to the edited HOME channels. Up to 255 letters can be used. This function is useful in organizing the HOME channels by, for example, applying a category name to each channel.

These comments are not transferred to the FTM-6000R/E.

Troubleshooting

- **The FTM-6000R/E cannot receive or transmit data to the computer. The Data transfer does not start.**
 - Verify that the programming cable is correctly connected to the FTM-6000R/E data port and to the Computer.
Connect correctly.
 - Is the computer COM Port setting correct?
Set the COM Port correctly.
 - Are you operating in a different order from the clicked the “Get Data from FTM-6000” in the “Communications” menu and displayed procedure?
Follow the on-screen instructions.
 - Are you operating in a different order from the clicked the “Send Data to FTM-6000” in the “Communications” menu and displayed procedure?
Follow the on-screen instructions.
- **The data transmission has stopped before completion**
 - Disconnecting the connection cable or poor contact of the connection cable.
Confirm the cable connection and try again.
- **The data import/export is not successful**
 - Adjust the number of the rows of CSV file.
 - Use the designated letter for the character string.
 - When importing and exporting channels such as memory channels and VFO channels, make sure that the template files are consistent. If the template files are different, an error will occur and the data import and export will not be successful.



Copyright 2021
YAESU MUSEN CO., LTD.
All rights reserved.

No portion of this manual may be
reproduced without the permission of
YAESU MUSEN CO., LTD.

YAESU MUSEN CO., LTD.

Tennozu Parkside Building
2-5-8 Higashi-Shinagawa, Shinagawa-ku, Tokyo 140-0002 Japan

YAESU USA

6125 Phyllis Drive, Cypress, CA 90630, U.S.A.

YAESU UK

Unit 12, Sun Valley Business Park, Winnall Close
Winchester, Hampshire, SO23 0LB, U.K.