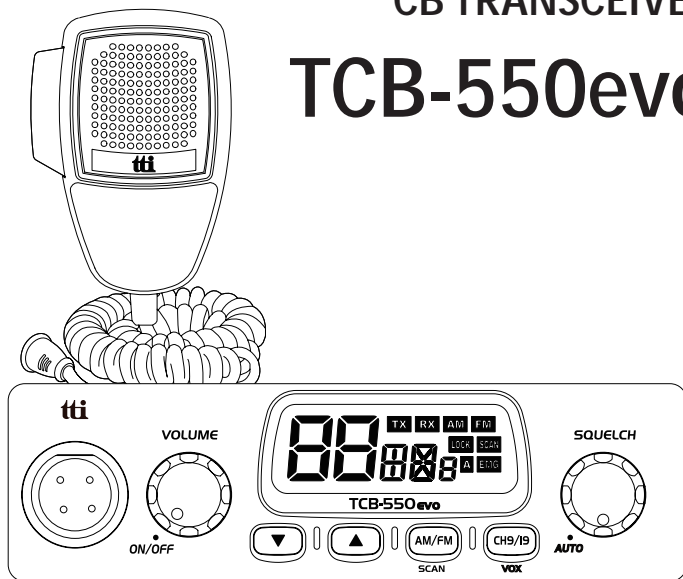


4W MOBILE CB TRANSCEIVER TCB-550evo

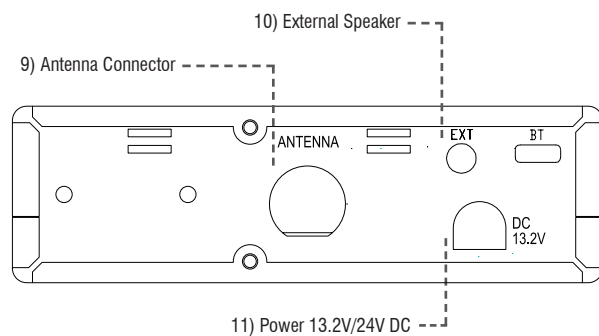
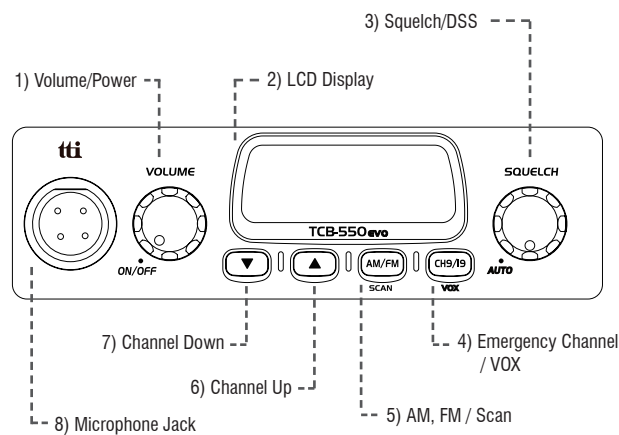


INSTRUCTION MANUAL



P/N 820-C55N-E00

4. Transceiver Controls and Functions



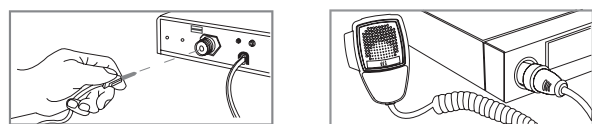
1. Supplied Accessories

Your transceiver is supplied with a full range of accessories to help you get started and virtually benefit from all the features straight away.

| | |
|--|----------|
| TCB-550evo Transceiver | 1 unit |
| Microphone with cord | 1 unit |
| Radio mounting bracket | 1 unit |
| Radio mounting thumb screw with rubber washer | 2 pieces |
| Mounting screw with washer (for transceiver bracket) | 3 pieces |
| Mounting screw with washer (for microphone bracket) | 2 pieces |
| Microphone mounting bracket | 1 unit |

2. Installation

Normal Installation using Mounting Bracket



- Put the mounting bracket on the proper location where you are going to install.
 - Drill holes and fix mounting bracket on the location.
 - Connect the antenna cable plug to the standard receptacle on the transceiver, which is marked "ANT".
 - Connect the radio using the included cigarette lighter plug.
 - Mount the microphone bracket on one side of the transceiver, or near it using two screws included.
 - Connect the microphone to the transceiver's microphone receptacle.
- Now you are ready to operate the transceiver.

1) Volume / Power Knob

2) LCD Display

3) Squelch / DSS Knob
Manual Adjustment : Turn this knob counter-clockwise until you hear the background noise and then turn the knob a little clockwise until the noise disappears. In this way, you get the best receive sensitivity.
DSS : Turn the knob counter-clockwise until you hear the click. The squelch level of your transceiver is dynamically adjusted.

4) Emergency 9,19 / VOX Button
Short press to go to the emergency channel (9 or 19).
Long press to activate the VOX.

5) AM,FM / Scan Button
Short press to change AM / FM.
Long press to activate Scan function.

6) Channel Up Button

7) Channel Down Button

8) Microphone Jack

9) Antenna Connector

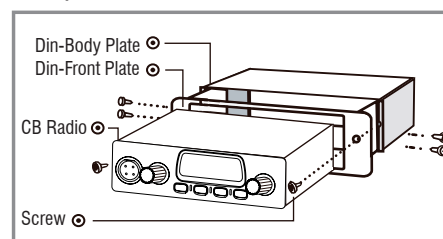
10) External Speaker Jack

11) Power 13.2V / 24V DC

12) Band Selection
Pressing AM/FM button and Turn on the transceiver to access Band Selection. Use Up/Down button to change Band.

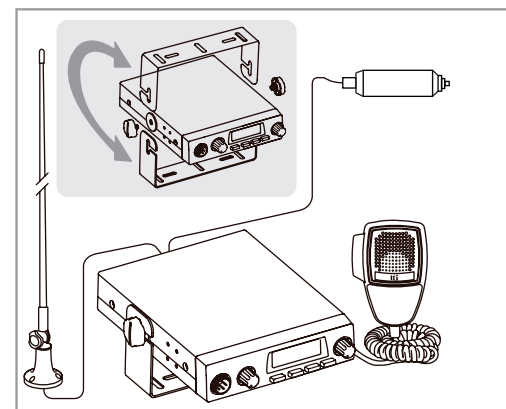
13) Menu Mode
Pressing CH9/19 button and Turn on the transceiver to access Menu mode. Use AM/FM button to select the setting.

Installing into Audio Compartment



- Install the Din-Body plate into the audio compartment (center fascia) of your vehicle. (Use the ready made locking flaps.)
- Set the transceiver in the Din-Front plate, and insert the transceiver in the Din-Body plate.
- Fix the screws through the transceiver, Din-Front plate and Din-Body plate.

Installing an Antenna



- Place the antenna as high as possible.
- The longer the antenna is, normally the better is the performance of the transceiver.
- Try to mount the antenna in the centre of the surface that you select.
- Make sure that you have a solid metal-to-metal ground connection.
- Be careful not to damage the cable during the installation.

Warning : Never try the operation of your transceiver before connecting a proper antenna in order not to cause any damage.

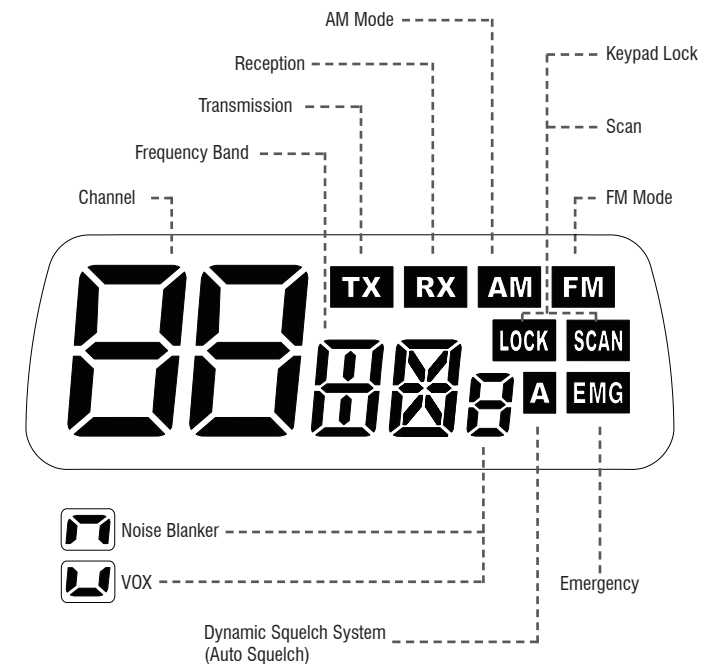
<MENU>

| Display | Functions | Settings |
|---------|------------------|-------------------|
| bp | Beep Tone | On, Off |
| Vo | VOX | Hi, Mid, Lo |
| nb | Noise Blanker | On, Off |
| to | Time-out Timer | 1-99 sec., Off |
| bc | Backlight Color | Blue, Purple, Red |
| d l | Backlight Dimmer | Hi, Lo |

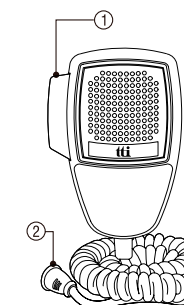
<BAND Chart>

| Setting | Display | Settings |
|-----------|---------|---|
| EC | EC | Europe 40ch. FM 4W |
| EU | EU | Europe 40ch. AM/FM 4W |
| D | d | Germany 80ch. FM 4W, 40ch. AM 4W |
| I2 | I2 | Italy 34ch. AM/FM 4W |
| I | I | Italy 40ch. AM/FM 4W |
| UE(EU/UK) | UE | UK 40ch. FM 4W (British Frequencies) + CEPT 40ch. FM 4W(EC) |
| UK | UH | UK 40ch. FM 4W (British Frequencies) |
| PL | PL | Poland 40ch. AM/FM 4W (Polish Frequencies : 5KHz) |
| F | F | France 40ch. FM 4W, 40ch AM 4W |
| E | E | Spain 40ch. AM/FM 4W |

3. LCD Display



5. Microphone



- PTT Button
- 4 Pin Microphone Connector

6. How to operate the Transceiver

- Make sure the microphone is connected to the microphone jack.
- Make sure the power cable is connected properly.
- Make sure the antenna is connected to the antenna receptacle.
- It is better to put the squelch control knob turned fully counter-clockwise.
- Turn on the transceiver and control the volume level.
- Adjust the squelch control knob to the optimum level.
- Select your desired channel.
- To transmit, press the PTT button and speak to the microphone.
- Release the PTT button to receive.

7. Trouble shooting

If you experience problems with your TCB-550evo transceiver, first check the power supply source. Poor connection of the power supply source can cause problems such as no transmission, no reception or poor reception, and weak or no sound. Ensure that the microphone and antenna are also well connected. If this does not solve the problem, reset your transceiver as follows.

- Switch off the transceiver.
- Pressing both AM/FM button, 9/19 button and turn on the transceiver.

This will reset the transceiver, so all the memories are erased and the parameters return to the initial factory setting. This should fix most problems. In case of further difficulty, please consult your dealer or visit our website.

8. CE Declaration



CE versions of the TCB-550evo which display the CE symbol on the product label, Comply with the essential requirements of the Radio Equipment Directive (RED) 2014/53/EU.

This warning symbol indicates that this equipment operates in non-harmonized frequency bands and/or maybe subject to licensing conditions in the country of use.

Be sure to check that you have the correct version of this radio or the correct programming of this radio, to comply with your national licensing requirements.

This unit can be used without license and charges in; Austria, Belgium, Bulgaria, Cyprus, Czech, Denmark, Estonia, Finland, France, Germany, Greece, Hungary, Iceland, Ireland, Italy, Latvia, Lithuania, Luxembourg, Malta, Netherlands, Norway, Poland, Portugal, Romania, Slovakia, Slovenia, Spain, Sweden, Switzerland, and U.K.

9. Safety Requirement

The power cable is for 13.2 / 24V DC only. Be sure the transceiver is off before connection the leads of the power cable to the power supply. It is important to observe the polarity even if the unit is protected against the accidental inversion :

- * Red : Positive pole (+)
- * Black : Negative pole (-)

The same colors are present on the battery and in the fuse box of the car. The unit must be wired for the negative ground only. To avoid damage, do not operate your CB radio without connecting a proper antenna

10. Specifications

| | | |
|-------------------|-----------------------------|---|
| GENERAL | Channel | 40 (See the frequency band chart) |
| | Frequency Range | 26.965 MHz ~ 27.405 MHz |
| | Operating mode | F3E (FM), A3E (AM) |
| | Frequency Control | PLL Synthesizer |
| | Frequency Tolerance | ±0.002% |
| | Operating Temperature Range | -10 to +55 °C |
| | Microphone | Plug-in Type |
| | Input Voltage | 13.2 / 24V DC ± 15% |
| | Size | 124 (W) x 135 (L) x 37 (H) |
| | Weight | 590 g |
| Antenna Connector | SO-239 type | |
| TRANSMITTER | Power Output | Duty cycle 10% 4 Watts @ 13.2V DC |
| | Modulation | AM: from 85% to 95% FM: 1.8KHz ± 0.2KHz |
| | Frequency Response | 300Hz to 3000Hz |
| | Output Impedance | 50ohms, Unbalanced |
| | Harmonic Suppression | Less than -36dBm |
| Current Drain | AM Full Mod. 1.6A Max. | |
| RECEIVER | Receiving System | Dual conversion superheterodyne |
| | IF Frequencies | Double conversion 1st 10.695MHz/2nd 455KHz |
| | Sensitivity | 0.7µV for 10dB(S+N)/N in AM Mode 0.7µV for 20dB SINAD in FM Mode |
| | Audio Output Power | 2W @ 8ohm |
| | Audio Distortion | Less than 8% @ 1KHz |
| | Image Rejection | More than 60dB |
| | Adjacent Channel Rejection | More than 60dB |
| | Conducted Spurious | Less than -57dBm |
| | Frequency Response | 300Hz to 2500Hz |
| | Built-in Speaker | 8ohms, Round |
| | Squelch | Adjustable; Threshold less than 1µV DSS; Less than 2µV |

* Specification is subject to change without prior notice.

11. Restrictions on the use

| Country | Band | Use restrictions and other comments |
|--|-------------------|--|
| BELGIUM SWITZERLAND | EU F EC | 40 Ch - 4W FM - Individual licence is required 40 Ch - 4W AM - Individual licence is required |
| DENMARK,NORWAY LUXEMBOURG,CZECH | EC | 40 Ch - 4W FM - Free use |
| FINLAND,PORTUGAL FRANCE,NETHERLANDS | EU F EC | 40 Ch - 4W FM - Free use 40 Ch - 4W AM - Free use |
| GERMANY | D EU D2 EC | 80 Ch - 4W FM - Individual licence is required 40 Ch - 4W AM - Individual licence is required 40 Ch - 4W AM - Use ch 4-15 only 40 Ch - 4W FM - Free use 12 Ch - 4W AM - Individual licence is required |
| | | fx Allowed: from 26.960 to 27.410 MHz "BAPT 222 ZV 104" |
| GREECE | E EU F I EC | 40 Ch - 4W FM - Free use 40 Ch - 4W AM - Free use |
| | | T/R 20-02 |
| IRELAND | E EU F I EC | 40 Ch - 4W FM - Free use 40 Ch - 4W AM - Free use |
| | | S.I. No 436 of 1998. WIRELESS TELEGRAPHY ACT, 1926 (SECTIONS) (EXEMPTION OF CITIZENS' BAND (CB) RADIOS) ORDER, 1998 |
| ITALY | E EU F I EC I2 | 40 Ch - 4W FM - General authorization is required 40 Ch - 4W AM - General authorization is required 34 Ch - 4W FM 34 Ch - 4W AM(ERP) *AM mode allowed on ch1-23 only |
| | | PNF issued on DM 08.07.02 NOTES 49 A-B-C-D-E-G |
| SPAIN | E EU F EC | 40 Ch - 4W FM - Individual licence is required 40 Ch - 4W AM - Individual licence is required |
| | | Art. 57 - Law 11/1998 dated 24th April |
| SWEDEN | EU F EC | 40 Ch - 4W FM - Free use 40 Ch - 4W AM - Individual licence is required |
| UK | UK EU | 40 Ch - 4W FM - Free use 40 Ch - 4W AM - Free use |
| POLAND | PL EU EC | 40 Ch - 4W FM / AM - Free use |

<< Declaration of Conformity >>

We, TTI Tech Co., Ltd. (#1312 361 Simindaero Dongan-gu Anyang-si Gyeonggi-do Korea) declare on our sole responsibility that this equipment complies with the essential requirements of the Radio Equipment Directive (RED) 2014/53/EU, and that any applicable Essential Test Suite measurements have been performed.

Kind of equipment : MOBILE CB TRANSCEIVER

Type-designation : TCB-550evo

Version (where applicable) :

This compliance is based on conformity with the following standards, specifications or documents :

| |
|------------------------------|
| EN 62311:2008 |
| EN 50665:2017 |
| EN 62368-1:2014+A11:2017 |
| EN 301 489-1 V2.2.3:2019-11 |
| EN 301 489-13 V1.2.1:2002-08 |
| EN 300 433 V2.1.1 (2016-05) |



N. Y. Kim
Director

Korea, Oct. 2022

Signature