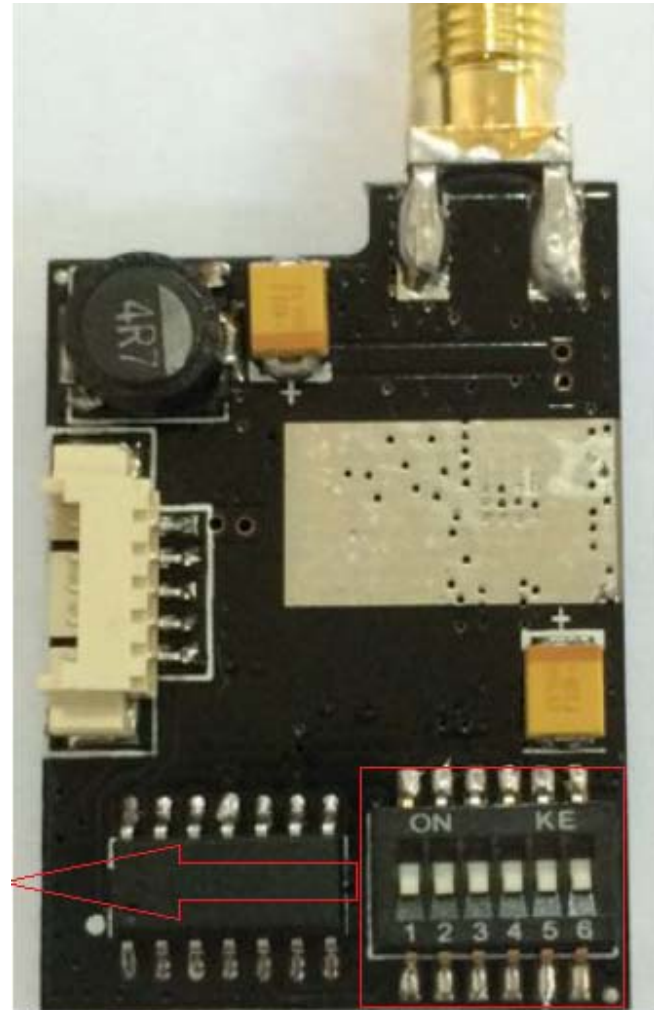
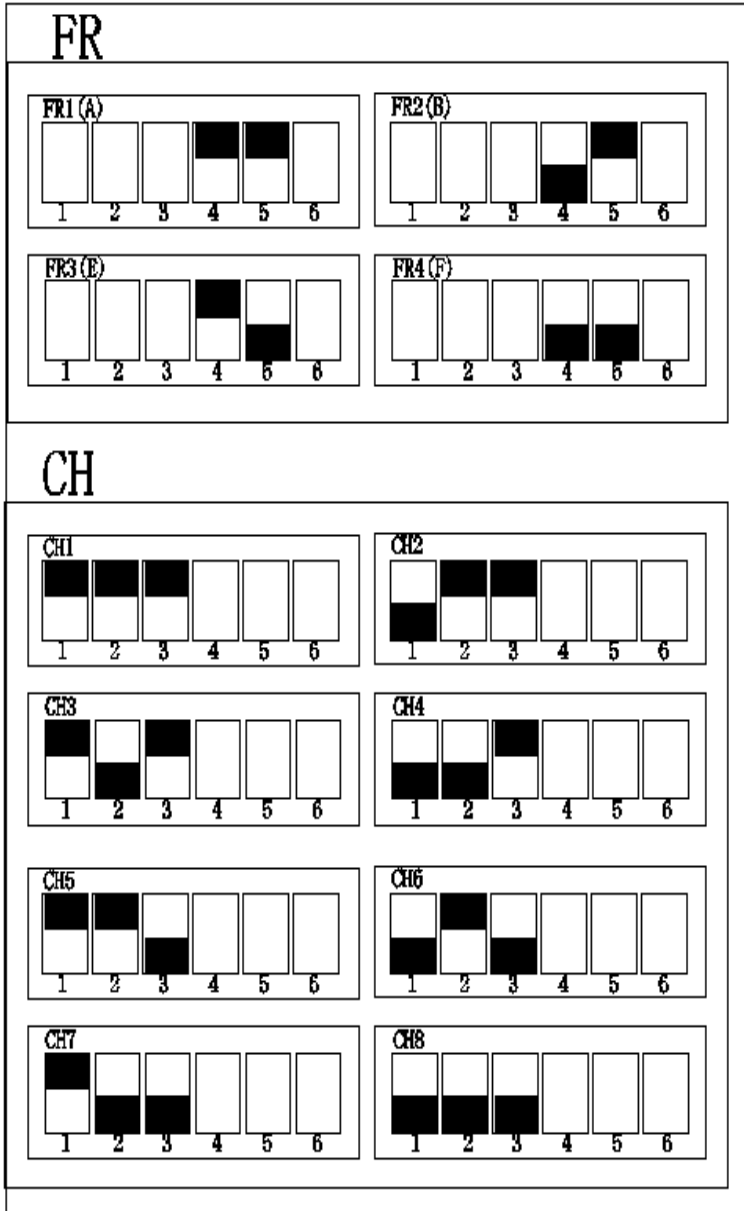


PRODUCT SPECIFICATION

MODE: TS58500						
5.8G 500mW 32 Channel AV Transmitter Module						
	Modulate		Wideband FM Modulate			
	Video Format		NTSC/PAL			
	Characteristics		Value			Units
			Min.	Typ.	Max.	
1	Output Impedance		---	50	---	Ohm
2	Output Power		26	26.5	27	dBm
3	Frequency range	Channel Frequency				
	FR1 or (A)	CH1	---	5865	---	MHz
		CH2	---	5845	---	MHz
		CH3	---	5825	---	MHz
		CH4	---	5805	---	MHz
		CH5	---	5785	---	MHz
		CH6	---	5765	---	MHz
		CH7	---	5745	---	MHz
		CH8	---	5725	---	MHz
	FR2 or (B)	CH1	---	5733	---	MHz
		CH2	---	5752	---	MHz
		CH3	---	5771	---	MHz
		CH4	---	5790	---	MHz
		CH5	---	5809	---	MHz
		CH6	---	5828	---	MHz
		CH7	---	5847	---	MHz
		CH8	---	5866	---	MHz

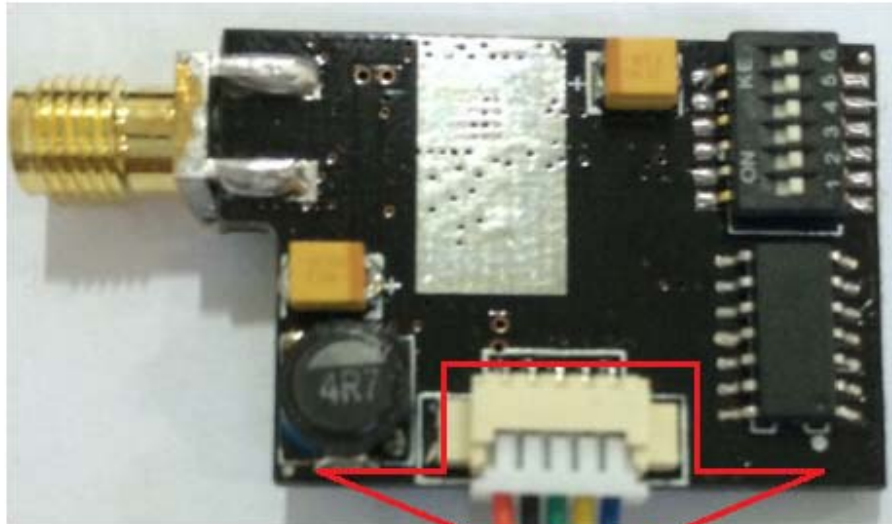
3	FR3 or (E)	CH1	---	5707	---	MHz
		CH2	---	5685	---	MHz
		CH3	---	5665	---	MHz
		CH4	---	5645	---	MHz
		CH5	---	5885	---	MHz
		CH6	---	5905	---	MHz
		CH7	---	5925	---	MHz
		CH8	---	5945	---	MHz
	FR4 or (F)	CH1	---	5740	---	MHz
		CH2	---	5760	---	MHz
		CH3	---	5780	---	MHz
		CH4	---	5800	---	MHz
		CH5	---	5820	---	MHz
		CH6	---	5840	---	MHz
		CH7	---	5860	---	MHz
		CH8	---	5880	---	MHz
4	Operating Voltage	7.0	12	24	V	
5	Supply current	---	220	---	mA	
6	Operating Temperature	-10	---	+85	°C	
7	Video Band Width	0	---	8.0	MHz	
8	Audio carrier Frequency	---	6.5	---	MHz	
9	Video Input Level	0.8	1.0	1.2	Vp-p	
10	Video Input Impedance	---	75	---	Ohm	
11	Audio Input Level	0.5	---	2.0	Vp-p	
12	Audio Input Impedance	---	10K	---	Ohm	
13	Weight	---	10	---	g	
14	Antenna Connector	RPSMA Connector				
15	Dimensions (L x W x H)	42x23x8mm				

Frequency and channel frequency table



FR	CH	CH							
		CH1	CH2	CH3	CH4	CH5	CH6	CH7	CH8
FR	FR1(A)	5865M	5845M	5825M	5805M	5785M	5765M	5745M	5725M
	FR2(B)	5733M	5752M	5771M	5790M	5809M	5828M	5847M	5866M
	FR3(E)	5705M	5685M	5665M	5645M	5885M	5905M	5925M	5945M
	FR4(F)	5740M	5760M	5780M	5800M	5820M	5840M	5860M	5880M

Application examples



Red:DC_IN(7-24V) Black:GND Green:AUDIO_IN Yellow:VIDEO_IN Blue:AUDIO_IN